

✓ indicates survey on file with tax map dept.

\* inadequate description

JANUARY 1, 1996

RELATIVE REPRESENTATION

A	B	C	D
E	F	G	H
I	J	K	L
M	N	O	P

# L A K E C O U N T Y



18

17

A	B	C	D
E	F	G	H
I	J	K	L
M	N	O	P

## THOMPSON TWP.

✓ indicates survey on file with tax map dept

\* Inadequate description

JANUARY 1, 1996  
RELATIVE REPRESENTATION

SCALE 1"=300'



13.50 A  
611-1071  
M.M. COLLEN

M.M. NEWHART & V.G. SHOFF 705-910  
553-1350 556-921  
150.24 AC.

174-176  
MOSELEY FARM, INC.  
1004-593

221-546  
524-622

173.58 A  
740-997

A & D.  
CIANFAGLIONE, JR.  
734-648

19

ARTHUR PIETRZYK  
12,000 AC.  
749-141

J.R. COLLINS  
953-1070

M.F.A. MOSELEY  
2.79 AC. 762-960

A.H. BOWERS  
2.84 AC. 886-1243

241-373  
H.A. MOSELEY

MOSELEY FARM, INC.  
1004-593

F.E. & B.L. FERNANDEZ  
998-871  
168-908

22.83 A

776-1055  
G.W. GUSDALA III  
578-683  
587-44  
735-263

193-563

20 A

R. Piras

345-224

C.E.A. KING  
5 A  
464-655

11.28 A

B.M. Vovpatric

735-174

11.28 A

735-174

11.28 A

735-174

11.28 A

735-174

11.28 A

735-174

11.28 A

735-174

11.28 A

735-174

11.28 A

735-174

11.28 A

735-174

11.28 A

735-174

11.28 A

735-174

11.28 A

735-174

11.28 A

735-174

11.28 A

735-174

11.28 A

735-174

11.28 A

735-174

11.28 A

33 A

G. Knuth

D. J. Judd  
585-977  
750-210

9.36 A

750-208

571-418

192 AC.

265-63

1005-339

7 A

735-1065

559-182

663-867

10.78 A

5170

10.78 A

5170

10.78 A

5170

10.78 A

5170

10.78 A

5170

10.78 A

5170

10.78 A

5170

10.78 A

5170

10.78 A

5170

10.78 A

5170

10.78 A

5170

10.78 A

5170

10.78 A

5170

10.78 A

5170

T.M. & G.M. REED  
1041-490  
2-21-96

750-208

571-418

192 AC.

265-63

1005-339

7 A

735-1065

559-182

663-867

10.78 A

5170

10.78 A

5170

10.78 A

5170

10.78 A

5170

10.78 A

5170

10.78 A

5170

10.78 A

5170

10.78 A

5170

10.78 A

5170

10.78 A

5170

10.78 A

5170

10.78 A

5170

10.78 A

5170

10.78 A

5170

10.78 A

5170

139,0134

2,1377

136,8757

2,14

134,7357

5,00

129,7357

2,79

126,9457

10,06

116,8857

116,8857

116,8857

116,8857

116,8857

116,8857

116,8857

116,8857

116,8857

116,8857

116,8857

116,8857

116,8857

116,8857

116,8857

116,8857

116,8857

116,8857

116,8857

116,8857

116,8857

116,8857

116,8857

116,8857

116,8857

116,8857

116,8857

116,8857

116,8857

116,8857

116,8857

116,8857

116,8857

116,8857

116,8857

116,8857

116,8857

116,8857

116,8857

139,0134

2,1377

136,8757

2,14

134,7357

5,00

129,7357

2,79

126,9457

10,06

116,8857

116,8857

116,8857

116,8857

116,8857

116,8857

116,8857

116,8857

116,8857

116,8857

116,8857

116,8857

116,8857

116,8857

116,8857

116,8857

116,8857

116,8857

116,8857

116,8857

116,8857

116,8857

116,8857

116,8857

116,8857

116,8857

116,8857

116,8857

116,8857

116,8857

116,8857

116,8857

116,8857

116,8857

116,8857

116,8857

116,8857

116,8857

116,8857

139,0134

2,1377

136,8757

2,14

134,7357

5,00

129,7357

2,79

126,9457

10,06

116,8857

116,8857

116,8857

116,8857

116,8857

116,8857

116,8857

116,8857

116,8857

116,8857

116,8857

116,8857

116,8857

116,8857

116,8857

116,8857

116,8857

116,8857

116,8857

116,8857

116,8857

116,8857

116,8857

116,8857

116,8857

116,8857

116,8857

116,8857

116,8857

116,8857

116,8857

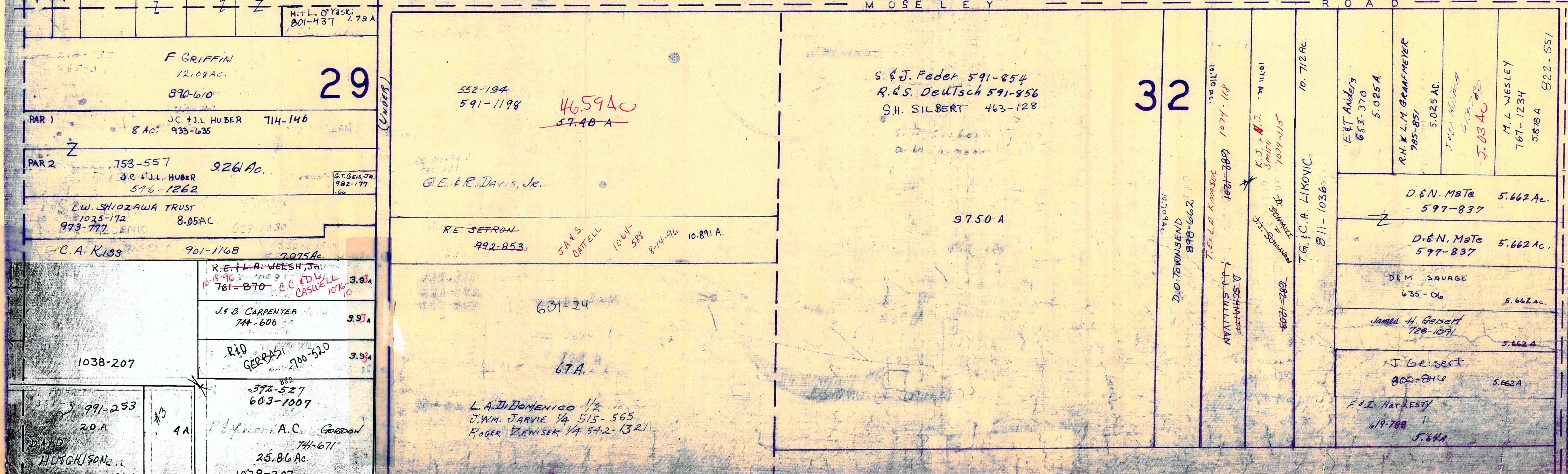
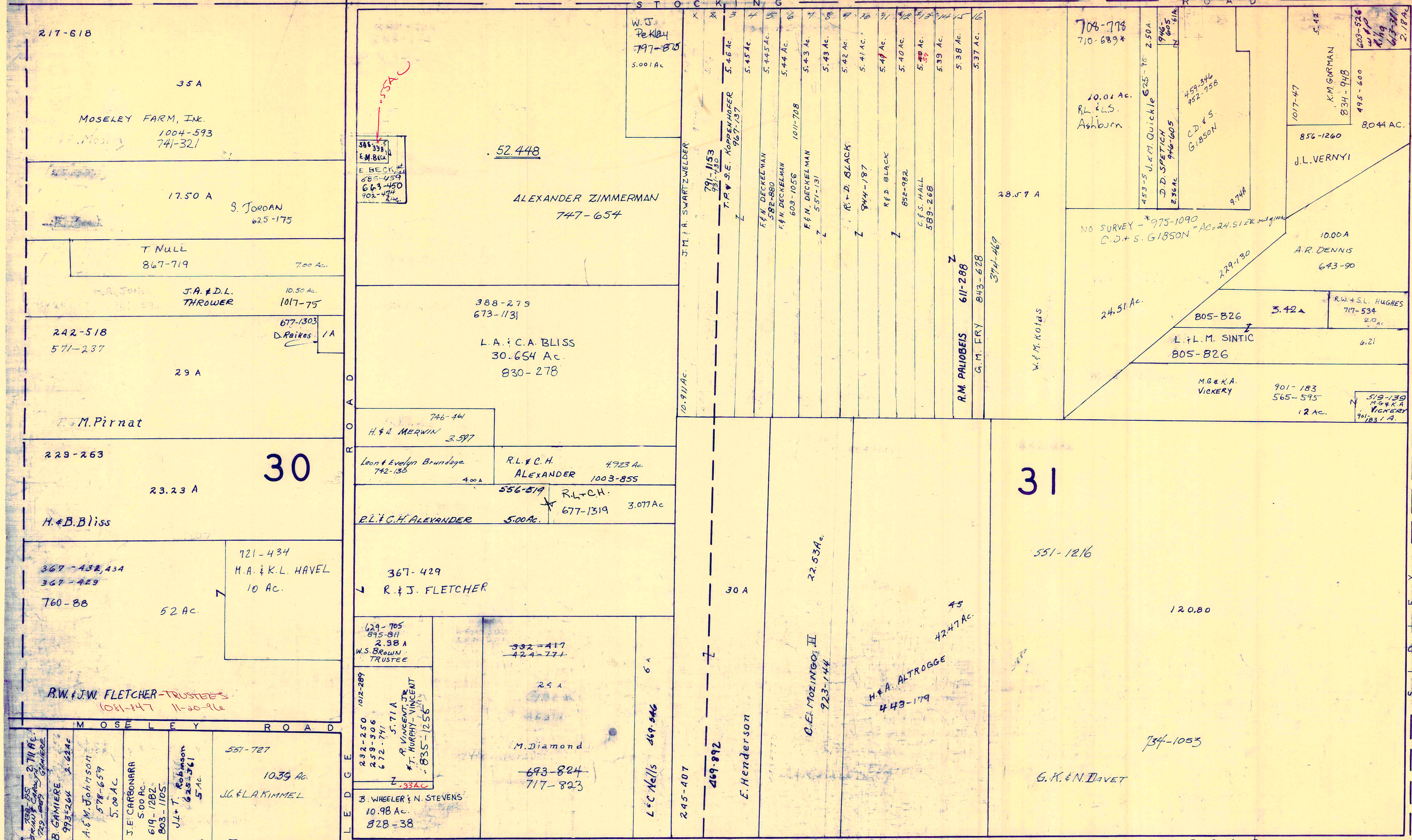
116,8857

116,8857

116,8857

116,8857

L A K E C O U N T Y



Grid table with letters A-P in a 3x4 arrangement.

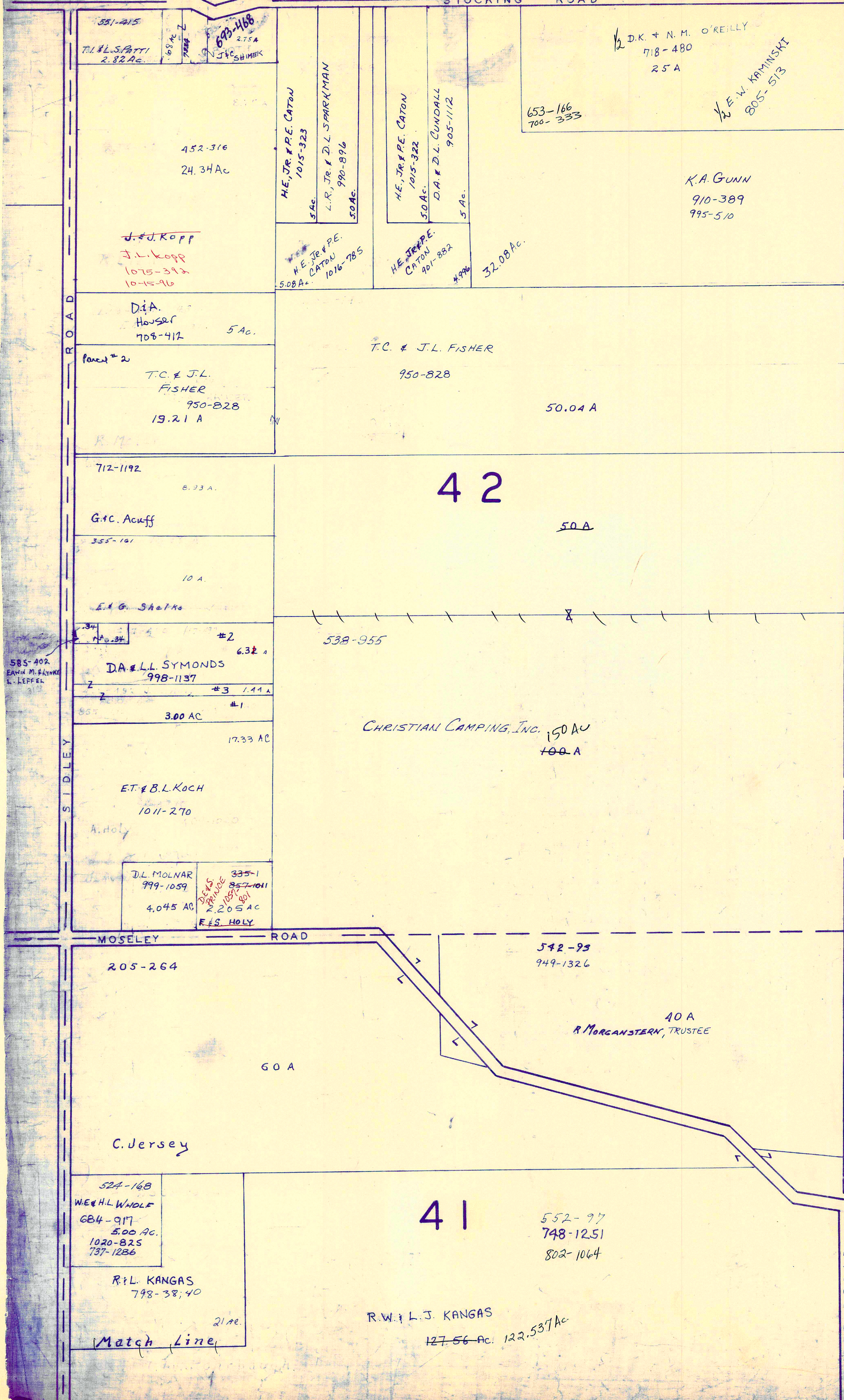
THOMPSON TWP

JANUARY 1, 1996  
RELATIVE REPRESENTATION

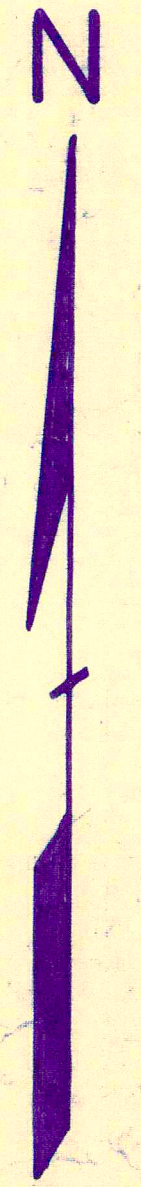
\* Inadequate description

L A K E C O U N T Y

STOCKING ROAD



A S H T A B U L A C O U N T Y



SCALE 1" = 300'

Indicates survey on file with tax map dept.

JAN 1, 1996

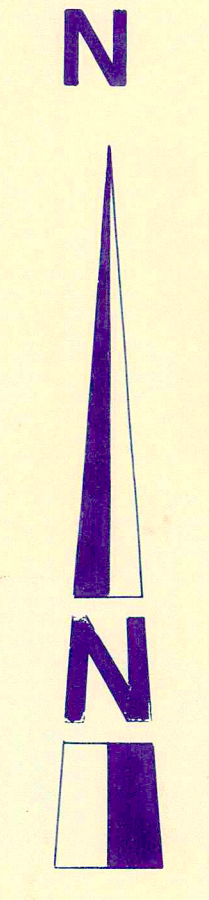
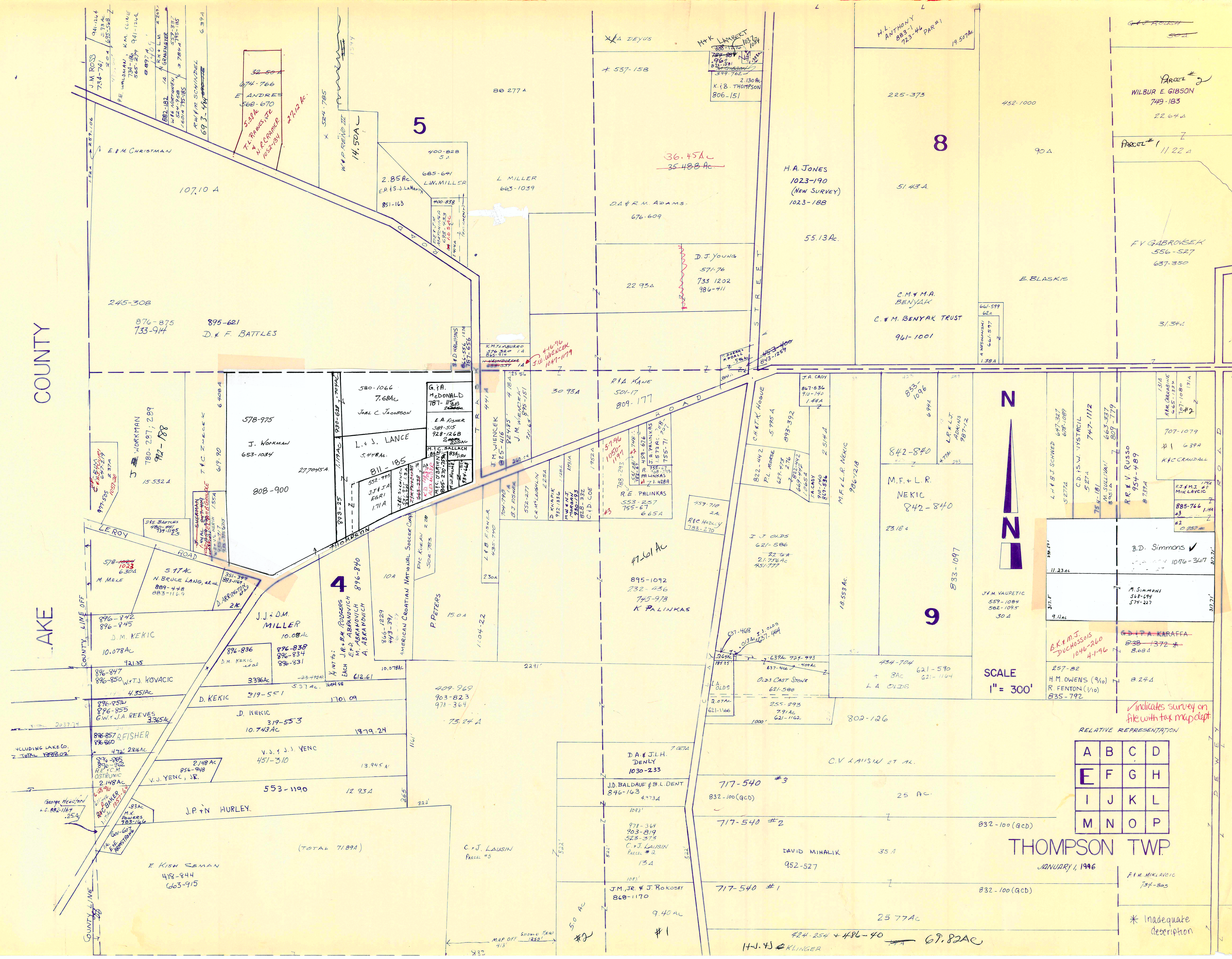
RELATIVE REPRESENTATION

A	B	C	D
E	F	G	H
I	J	K	L
M	N	O	P

THOMPSON T.V. Match Line

COUNTY

LAKE



SCALE  
1" = 300'

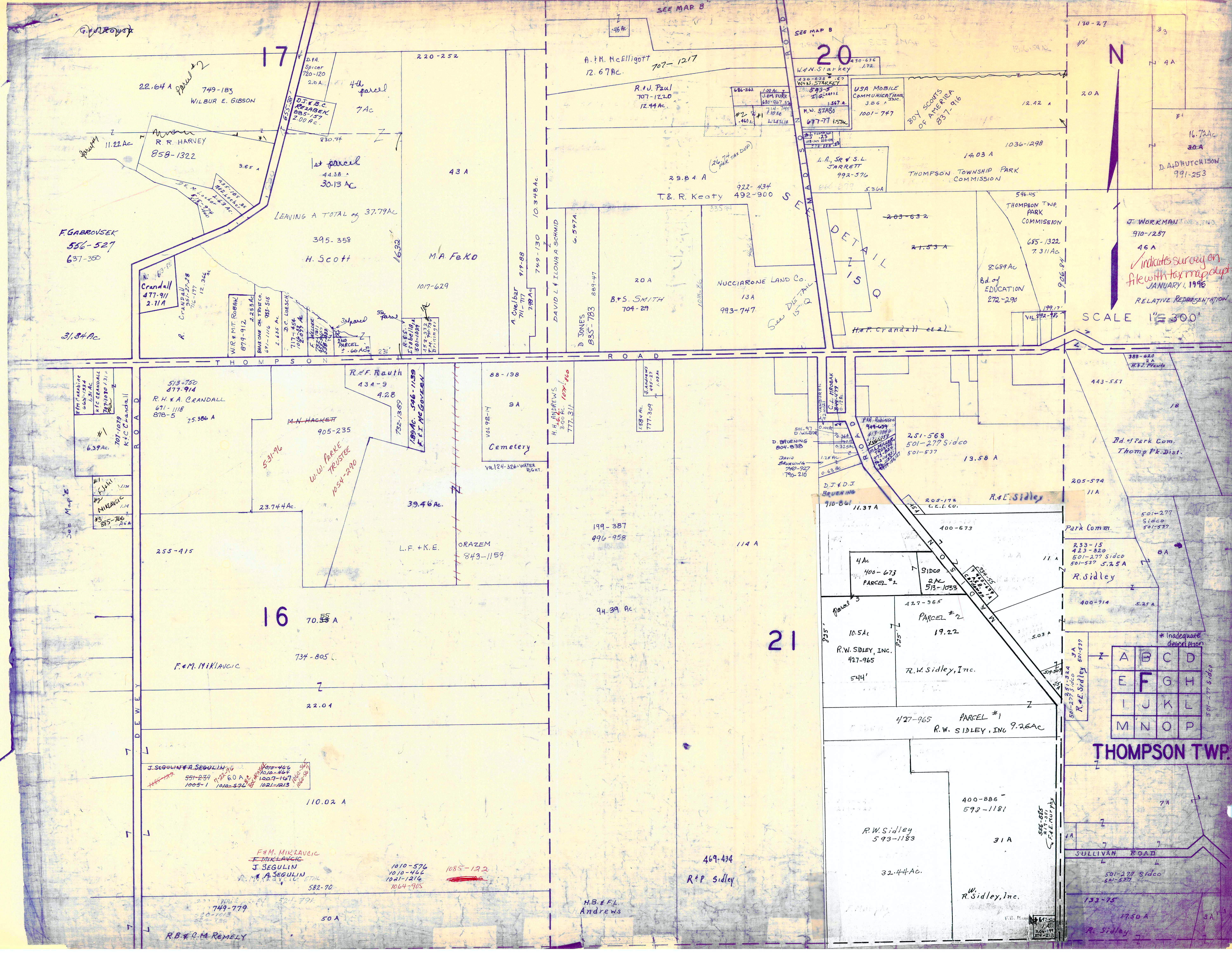
RELATIVE REPRESENTATION

A	B	C	D
E	F	G	H
I	J	K	L
M	N	O	P

THOMPSON TWP  
JANUARY 1, 1996

F.M. MILKAVIC  
734-805

\* Inadequate description



G. W. ROYSE

SEE MAP B

SEE MAP B

20

N

F. GABROVSEK  
556-527  
637-350

31.34 Ac

11.22 Ac  
R. R. HARVEY  
858-1322

Crandall  
477-911  
2.11 A

1st parcel  
44.38 A  
30.13 Ac

395-358  
H. Scott

W.R. MITROBAC  
879-912  
2.253 Ac

R.F. Rauth  
434-9  
4.28

M.N. HACKETT  
905-235

23.744 Ac

39.46 Ac

70.55 A

734-805 C

110.02 A

F.M. MIKLAVIC  
J. SEGULIN  
A. SEGULIN

R.B. & R.M. REMELY

43 A

MA FeKO

1017-629

88-198

Cemetery

199-387  
496-958

94.39 Ac

114 A

469-434

R.P. Sidley

H.B. & F.L. Andrews

50 A

A. & K. McElligott  
12.67 Ac.  
707-1217

R. & J. Paul  
707-1220  
12.44 Ac.

29.84 A

T. & R. Keaty  
492-900

20 A

B. & S. SMITH  
704-29

993-747

13 A

88-198

94.39 Ac

114 A

469-434

R.P. Sidley

H.B. & F.L. Andrews

50 A

W.N. Starkey  
430-636

USA MOBILE COMMUNICATIONS  
3.86 A  
1001-747

14.03 A

L.A. SR & S.L. JARRETT  
992-576

20 A

THOMPSON TWP. PARK COMMISSION

8.689 Ac

Bd. of EDUCATION  
272-290

199-17

114 A

469-434

R.P. Sidley

H.B. & F.L. Andrews

50 A

W.N. Starkey  
430-636

USA MOBILE COMMUNICATIONS  
3.86 A  
1001-747

14.03 A

L.A. SR & S.L. JARRETT  
992-576

20 A

THOMPSON TWP. PARK COMMISSION

8.689 Ac

Bd. of EDUCATION  
272-290

199-17

114 A

469-434

R.P. Sidley

H.B. & F.L. Andrews

50 A

170-27

16.72 Ac

D. & D. HUTCHISON  
991-253

20 A

J. WORKMAN  
910-1257

46 A

Indicates survey on file with tax map as of JANUARY 1, 1996

RELATIVE REPRESENTATION

SCALE 1" = 300'

388-620

443-557

Bd. of Park Com. Thompson Pk. Dist.

205-574

11 A

501-277 Sidco

501-537

233-15

423-820

501-277 Sidco

501-537 S. 2.5 A

R. Sidley

400-714

5.25 A

11 A

A	B	C	D
E	F	G	H
I	J	K	L
M	N	O	P

THOMPSON TWP.

\* Inadequate description

501-277 Sidco

7 A

SULLIVAN ROAD

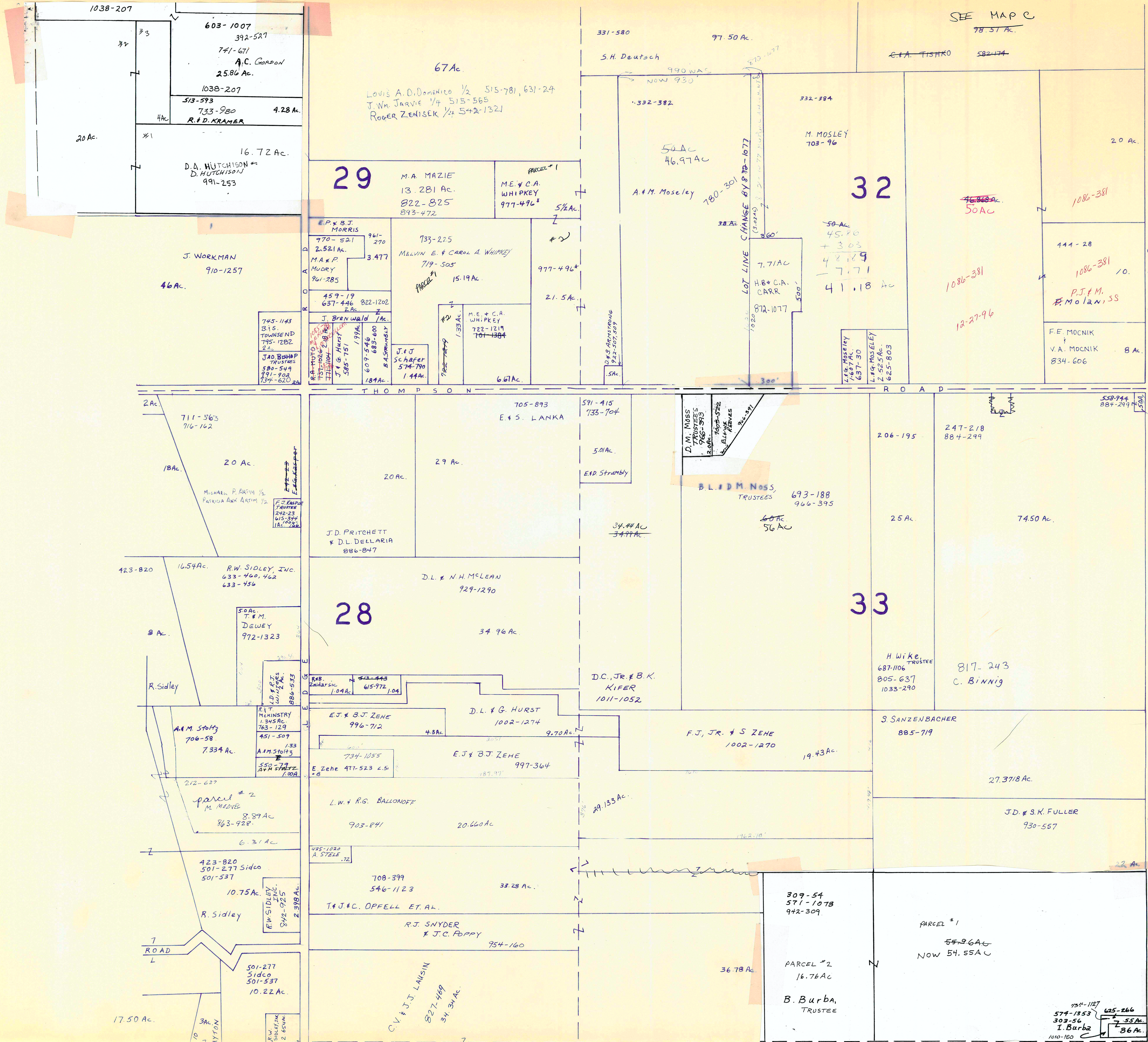
501-277 Sidco

501-537

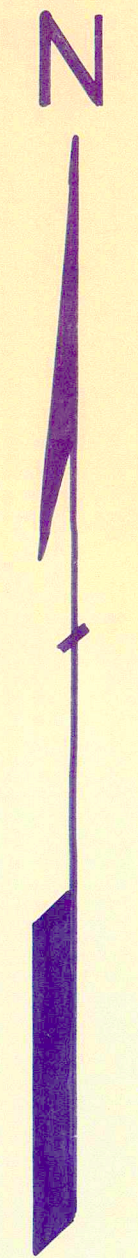
17.50 A

R. Sidley

3 A



SEE MAP C  
78.51 Ac.



SCALE 1" = 300'

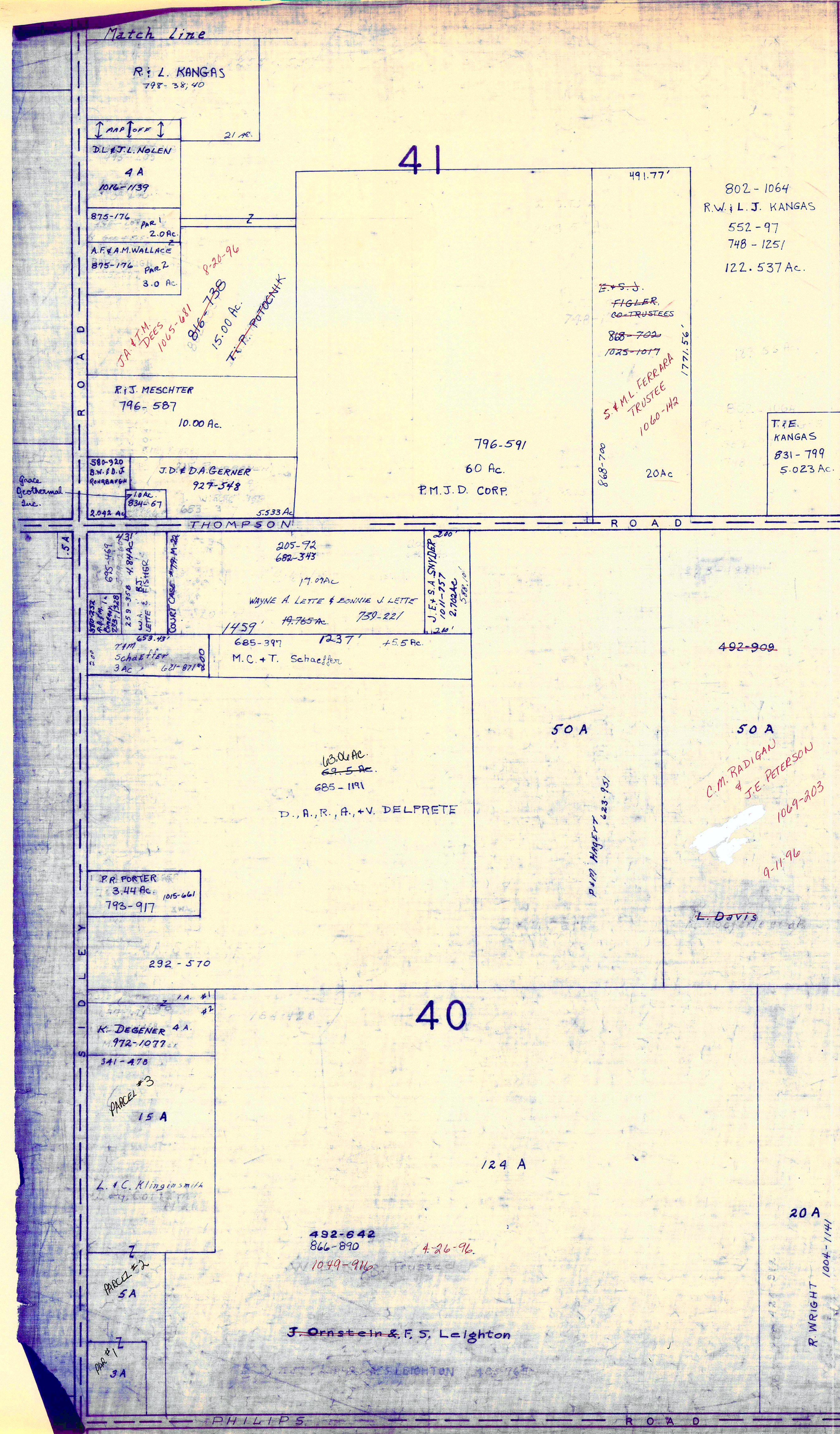
A	B	C	D
E	F	G	H
I	J	K	L
M	N	O	P

**THOMPSON TWP.**

JANUARY 1, 1996  
RELATIVE REPRESENTATION

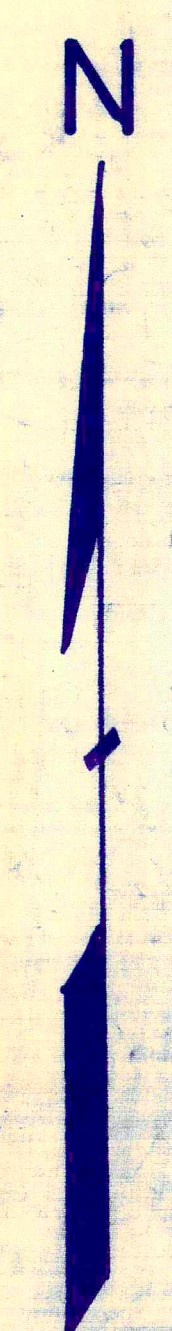
\* Inadequate description

✓ indicates survey on file with tax map dept.



Match Line

ROAD COUNTY ASHTABULA



✓ indicates survey on file with tax map dept.

SCALE 1" = 300'

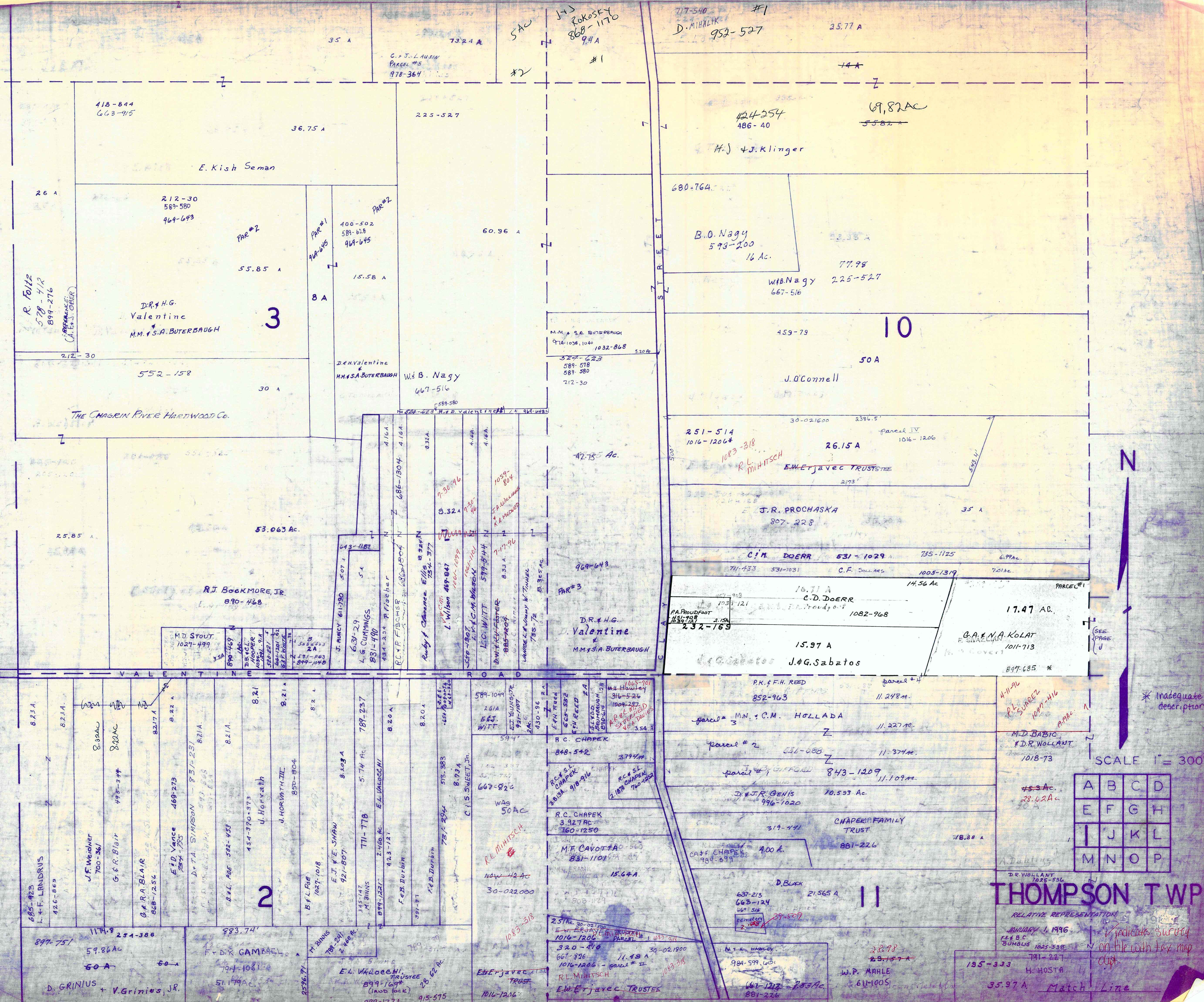
JANUARY 1, 1998  
RELATIVE REPRESENTATION

A	B	C	D
E	F	G	H
I	J	K	L
M	N	O	P

THOMPSON TWP

COUNTY

LAKELAKE



SCALE 1" = 300'

A	B	C	D
E	F	G	H
I	J	K	L
M	N	O	P

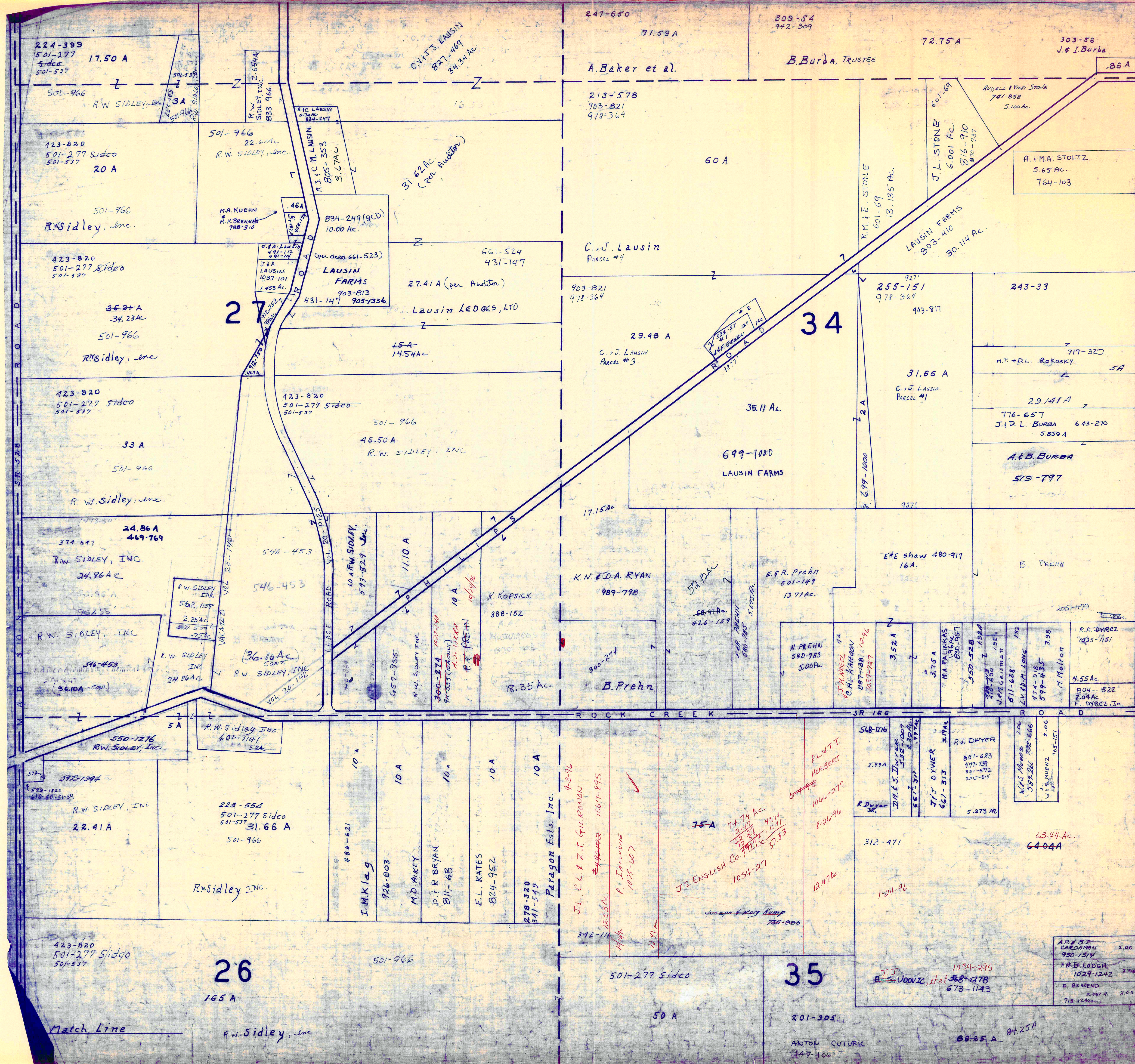
THOMPSON TWP.

RELATIVE REPRESENTATION  
 JANUARY 1, 1996  
 RE: B.C. BUMBLES 1025-538  
 195-333 H. HOSTA  
 35.97 A Match Line

\* Inadequate description

Indicates survey on file with tax map dept.





SCALE 1"=300'

A	B	C	D
E	F	G	H
I	J	K	L
M	N	O	P

THOMPSON TWP.

JAN 6, 1996

RELATIVE REPRESENTATION

Indicates survey on file with tax map dept.

Match Line

Match Line

A.P. # 32	CARDAMIN	2.06
930-1314		
R.B. LOUGH	1029-1242	2.06
D. BEAREND	718-1242	2.00

26  
165 A

35

501-277 Sidco

201-305

50 A

84.25 A

J.S. ENGLISH Co. 1054-27  
1066-277  
1066-96  
1247A

RL & TJ HERBERT  
1066-277  
1066-96

J.L. C.L. & J.J. GILCORNO  
9-3-96  
1067-875

E.L. KATES  
824-952

D.T. R. BRYAN  
811-68

M.D. ARKEY  
926-803

I.M. KILG  
486-621

223-554  
501-277 Sidco  
501-537  
31.66 A  
501-966

R.W. Sidley Inc.

550-1276  
R.W. Sidley, Inc.  
22.41 A

423-820  
501-277 Sidco  
501-537

Match Line

26

35

501-277 Sidco

201-305

50 A

84.25 A

J.S. ENGLISH Co. 1054-27  
1066-277  
1066-96  
1247A

RL & TJ HERBERT  
1066-277  
1066-96

J.L. C.L. & J.J. GILCORNO  
9-3-96  
1067-875

E.L. KATES  
824-952

D.T. R. BRYAN  
811-68

M.D. ARKEY  
926-803

I.M. KILG  
486-621

223-554  
501-277 Sidco  
501-537  
31.66 A  
501-966

R.W. Sidley Inc.

550-1276  
R.W. Sidley, Inc.  
22.41 A

423-820  
501-277 Sidco  
501-537

Match Line

26

35

501-277 Sidco

201-305

50 A

84.25 A

J.S. ENGLISH Co. 1054-27  
1066-277  
1066-96  
1247A

RL & TJ HERBERT  
1066-277  
1066-96

J.L. C.L. & J.J. GILCORNO  
9-3-96  
1067-875

E.L. KATES  
824-952

D.T. R. BRYAN  
811-68

M.D. ARKEY  
926-803

I.M. KILG  
486-621

223-554  
501-277 Sidco  
501-537  
31.66 A  
501-966

R.W. Sidley Inc.

550-1276  
R.W. Sidley, Inc.  
22.41 A

423-820  
501-277 Sidco  
501-537

Match Line

26

35

501-277 Sidco

201-305

50 A

84.25 A

J.S. ENGLISH Co. 1054-27  
1066-277  
1066-96  
1247A

RL & TJ HERBERT  
1066-277  
1066-96

J.L. C.L. & J.J. GILCORNO  
9-3-96  
1067-875

E.L. KATES  
824-952

D.T. R. BRYAN  
811-68

M.D. ARKEY  
926-803

I.M. KILG  
486-621

223-554  
501-277 Sidco  
501-537  
31.66 A  
501-966

R.W. Sidley Inc.

550-1276  
R.W. Sidley, Inc.  
22.41 A

423-820  
501-277 Sidco  
501-537

Match Line

26

35

501-277 Sidco

201-305

50 A

84.25 A

J.S. ENGLISH Co. 1054-27  
1066-277  
1066-96  
1247A

RL & TJ HERBERT  
1066-277  
1066-96

J.L. C.L. & J.J. GILCORNO  
9-3-96  
1067-875

E.L. KATES  
824-952

D.T. R. BRYAN  
811-68

M.D. ARKEY  
926-803

I.M. KILG  
486-621

223-554  
501-277 Sidco  
501-537  
31.66 A  
501-966

R.W. Sidley Inc.

550-1276  
R.W. Sidley, Inc.  
22.41 A

423-820  
501-277 Sidco  
501-537

Match Line

26

35

501-277 Sidco

201-305

50 A

84.25 A

J.S. ENGLISH Co. 1054-27  
1066-277  
1066-96  
1247A

RL & TJ HERBERT  
1066-277  
1066-96

J.L. C.L. & J.J. GILCORNO  
9-3-96  
1067-875

E.L. KATES  
824-952

D.T. R. BRYAN  
811-68

M.D. ARKEY  
926-803

I.M. KILG  
486-621

223-554  
501-277 Sidco  
501-537  
31.66 A  
501-966

R.W. Sidley Inc.

550-1276  
R.W. Sidley, Inc.  
22.41 A

423-820  
501-277 Sidco  
501-537

Match Line

26

35

501-277 Sidco

201-305

50 A

84.25 A

J.S. ENGLISH Co. 1054-27  
1066-277  
1066-96  
1247A

RL & TJ HERBERT  
1066-277  
1066-96

J.L. C.L. & J.J. GILCORNO  
9-3-96  
1067-875

E.L. KATES  
824-952

D.T. R. BRYAN  
811-68

M.D. ARKEY  
926-803

I.M. KILG  
486-621

223-554  
501-277 Sidco  
501-537  
31.66 A  
501-966

R.W. Sidley Inc.

550-1276  
R.W. Sidley, Inc.  
22.41 A

423-820  
501-277 Sidco  
501-537

Match Line

26

35

501-277 Sidco

201-305

50 A

84.25 A

J.S. ENGLISH Co. 1054-27  
1066-277  
1066-96  
1247A

RL & TJ HERBERT  
1066-277  
1066-96

J.L. C.L. & J.J. GILCORNO  
9-3-96  
1067-875

E.L. KATES  
824-952

D.T. R. BRYAN  
811-68

M.D. ARKEY  
926-803

I.M. KILG  
486-621

223-554  
501-277 Sidco  
501-537  
31.66 A  
501-966

R.W. Sidley Inc.

550-1276  
R.W. Sidley, Inc.  
22.41 A

423-820  
501-277 Sidco  
501-537

Match Line

26

35

501-277 Sidco

201-305

50 A

84.25 A

J.S. ENGLISH Co. 1054-27  
1066-277  
1066-96  
1247A

RL & TJ HERBERT  
1066-277  
1066-96

J.L. C.L. & J.J. GILCORNO  
9-3-96  
1067-875

E.L. KATES  
824-952

D.T. R. BRYAN  
811-68

M.D. ARKEY  
926-803

I.M. KILG  
486-621

223-554  
501-277 Sidco  
501-537  
31.66 A  
501-966

R.W. Sidley Inc.

550-1276  
R.W. Sidley, Inc.  
22.41 A

423-820  
501-277 Sidco  
501-537

Match Line

26

35

501-277 Sidco

201-305

50 A

84.25 A

J.S. ENGLISH Co. 1054-27  
1066-277  
1066-96  
1247A

RL & TJ HERBERT  
1066-277  
1066-96

J.L. C.L. & J.J. GILCORNO  
9-3-96  
1067-875

E.L. KATES  
824-952

D.T. R. BRYAN  
811-68

M.D. ARKEY  
926-803

I.M. KILG  
486-621

223-554  
501-277 Sidco  
501-537  
31.66 A  
501-966

R.W. Sidley Inc.

550-1276  
R.W. Sidley, Inc.  
22.41 A

423-820  
501-277 Sidco  
501-537

Match Line

26

35

501-277 Sidco

201-305

50 A

84.25 A

J.S. ENGLISH Co. 1054-27  
1066-277  
1066-96  
1247A

RL & TJ HERBERT  
1066-277  
1066-96

J.L. C.L. & J.J. GILCORNO  
9-3-96  
1067-875

E.L. KATES  
824-952

D.T. R. BRYAN  
811-68

M.D. ARKEY  
926-803

I.M. KILG  
486-621

223-554  
501-277 Sidco  
501-537  
31.66 A  
501-966

R.W. Sidley Inc.

550-1276  
R.W. Sidley, Inc.  
22.41 A

423-820  
501-277 Sidco  
501-537

Match Line

26

35

501-277 Sidco

201-305

50 A

84.25 A

J.S. ENGLISH Co. 1054-27  
1066-277  
1066-96  
1247A

RL & TJ HERBERT  
1066-277  
1066-96

J.L. C.L. & J.J. GILCORNO  
9-3-96  
1067-875

E.L. KATES  
824-952

D.T. R. BRYAN  
811-68

M.D. ARKEY  
926-803

I.M. KILG  
486-621

223-554  
501-277 Sidco  
501-537  
31.66 A  
501-966

R.W. Sidley Inc.

550-1276  
R.W. Sidley, Inc.  
22.41 A

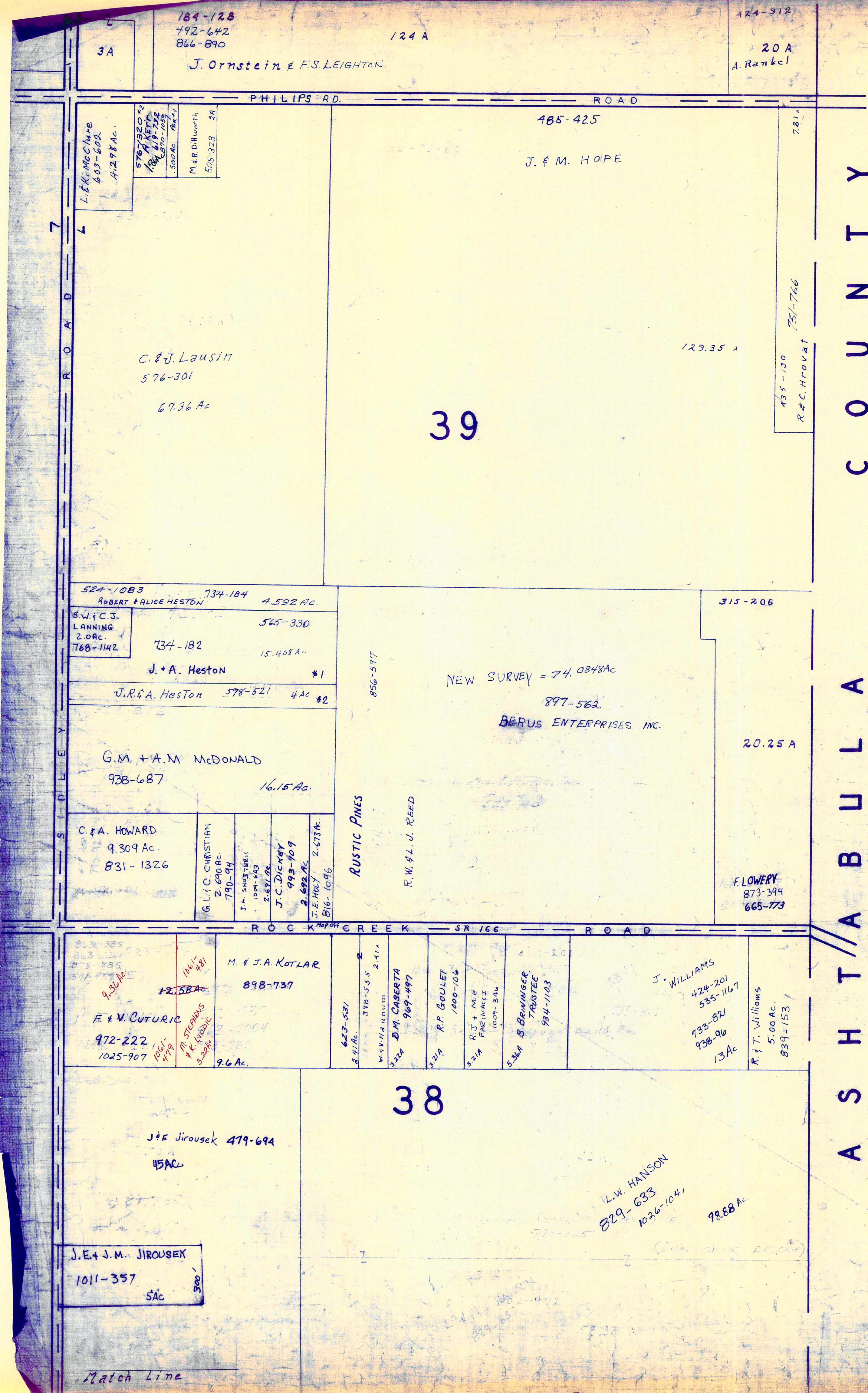
423-820  
501-277 Sidco  
501-537

Match Line

26

35

501-277 Sidco



A S H T A B U L L A C O U N T Y



\* Inadequate description

✓ indicates survey on file with tax map Dept.

SCALE 1" = 300'

JAN 1, 1996  
RELATIVE REPRESENTATION

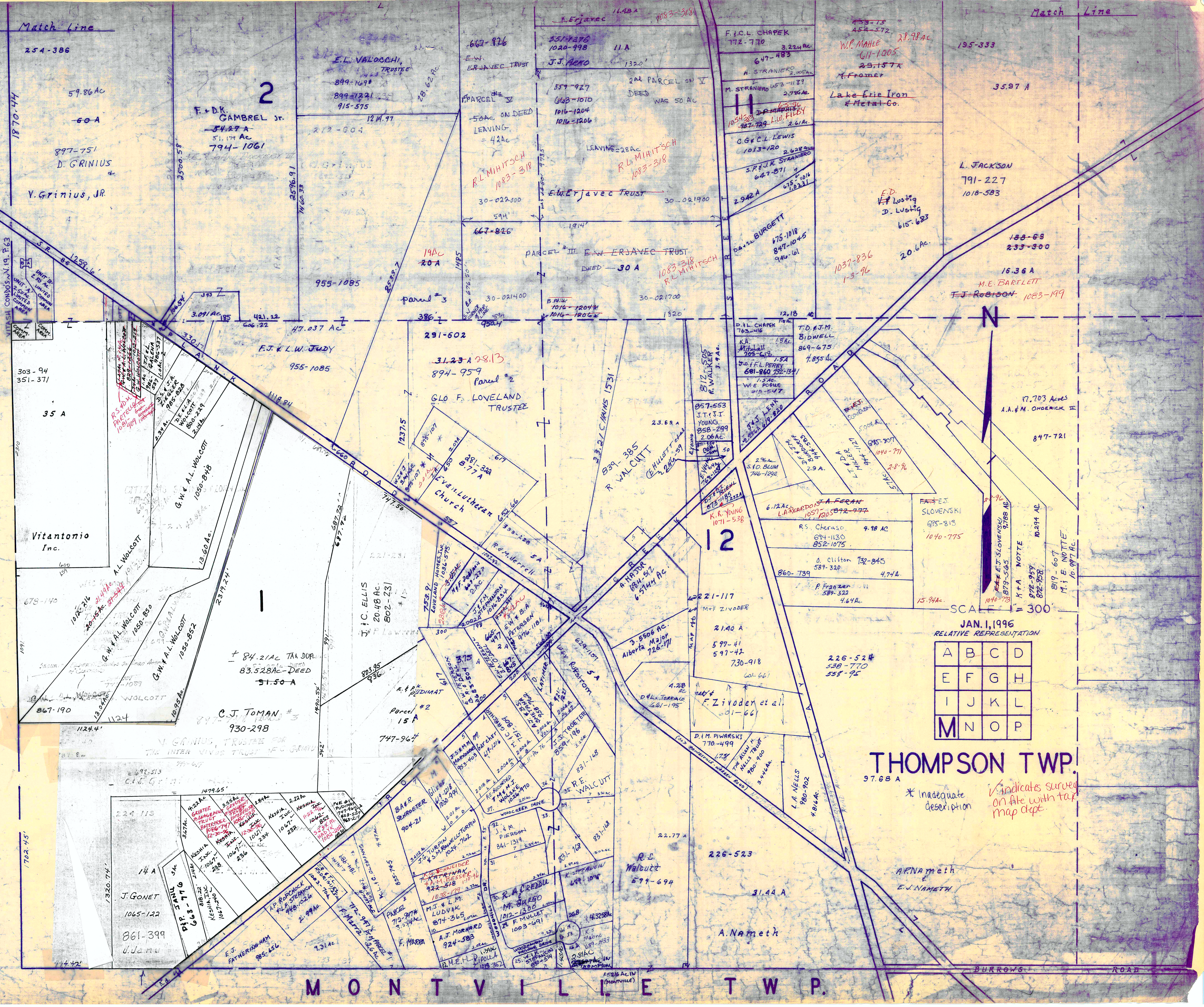
A	B	C	D
E	F	G	H
I	J	K	L
M	N	O	P

THOMPSON  
Match Line

Match Line

VITASHI CONDUMINIUMS VOL. 19, PG. 63  
UNIT "K"  
UNIT "B"

L A K E  
C O U N T Y



JAN. 1, 1996  
RELATIVE REPRESENTATION

A	B	C	D
E	F	G	H
I	J	K	L
M	N	O	P

THOMPSON TWP.  
97.68 A

\* Inadequate description  
✓ indicates surveyed on file with tax map dept.

M O N T V I L L E T W P.

BURROWS ROAD





Match Line

Match Line

98.88 Ac.

L.W. HANSON  
1026-1041 829-633

S.C. & V.A. THORNHILL  
1031-413

38

34.19 Ac.

J. Stocker

7

34.69 Ac.

459-355

603-125  
899-276  
R. FOLTZ

50 A

L

50 A

46.88 Ac.

J. STOCKER

T.E. & M.A.  
STOCKER

Z

989-399

7.47 Ac.

T.W. SEBIAN  
989-186

5.75 Ac.

2.57-418

7.16-526

2.39 Ac.

E. STOCKER et al

parcel # 2  
parcel # 2

459-355

25 A

24.734 Ac.

20.399 Ac.

Parcel # 3

459-355

J. STOCKER

69.25 A

52.935 Ac.

14.191 Ac

Parcel # 5 459-355

C.W. & B.A. CLEMSON

957-222-110 Ac

37

3794.97'

85.09 Ac.  
B.A. CLEMSON  
C.W. CLEMSON

867-971  
942-1195  
942-1197

859-399  
853-354  
942-358  
E. STOCKER et al  
2.28 Ac.

491-654

5.96 Ac.

496-153

6.942 A

J. Brazofsky

512-628

M. Smialek & d.  
A. Smialek & d.

H.&A. HOUSER 36.88 Ac.

F&K Retych Jr.  
603-882

4.74 Ac.

425-955

J. BRAZOFSKY

SR & M.E. KING

947-663

4.54 Ac.

744-775

S I D L E Y

1965.70'

1268.70'

A S H T A B U L A C O U N T Y

1.50  
Approved (Trusty)

map



JAN 1, 1996

✓ indicates survey on file with tax map dept.

\* Inadequate description

SCALE 1" = 300'

RELATIVE REPRESENTATION

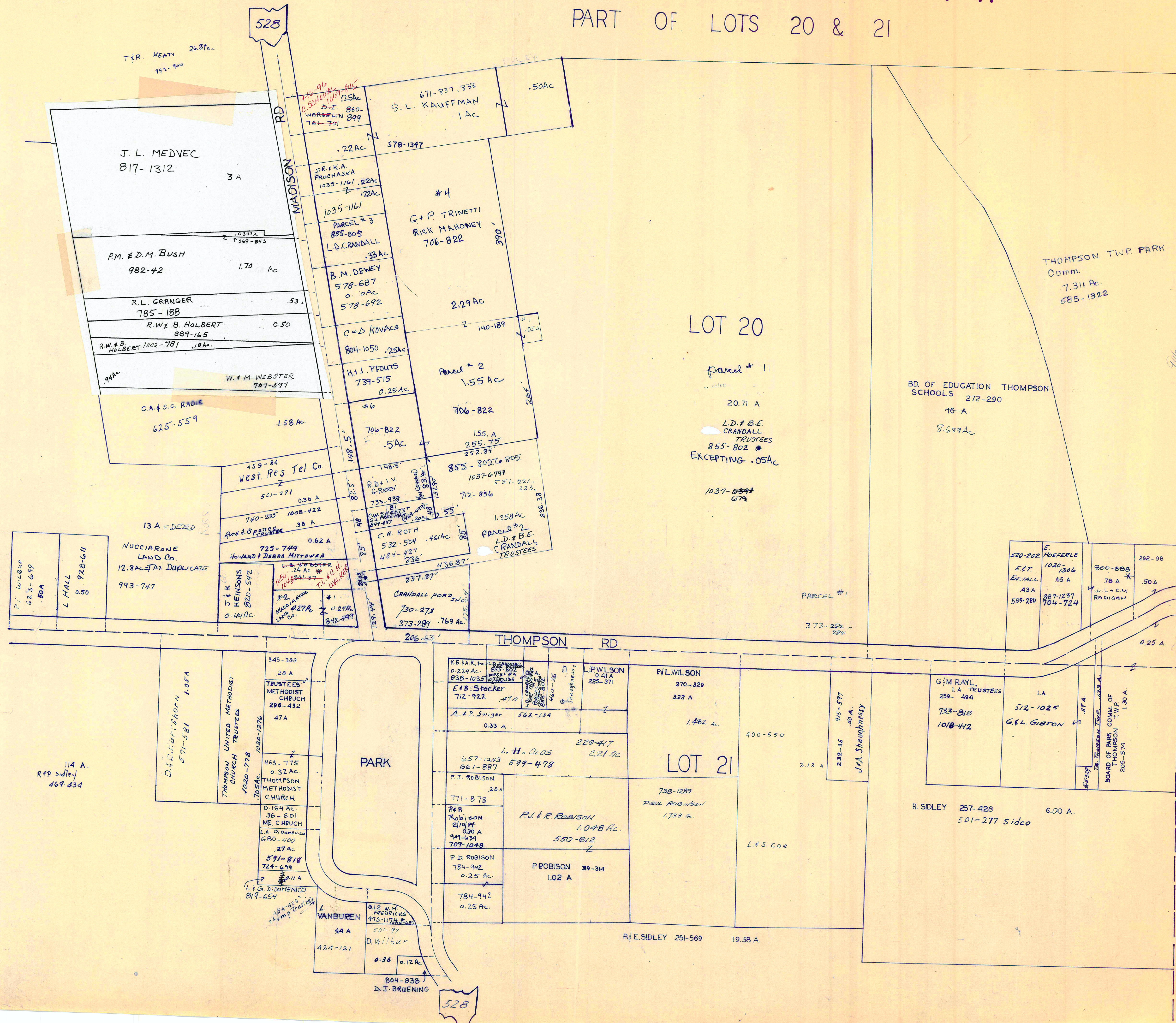
A	B	C	D
E	F	G	H
I	J	K	L
M	N	O	P

MONTVILLE TWP.

THOMPSON TWP.

# THOMPSON TP

PART OF LOTS 20 & 21



LOT 29

LOT 20

LOT 21

LOT 28

SCALE 1 IN. = 100 FT.

JANUARY 1, 1996  
RELATIVE REPRESENTATION

\* inadequate description

✓ indicates survey on file with tax map dept

15 Q

THOMPSON

N

528

528

114 A.  
R.P. Sidley  
469-434

D. J. Bruening  
571-581  
1.05 A

THOMPSON UNITED METHODIST CHURCH TRUSTEES  
420-778  
705 AC.

TRUSTEES METHODIST CHURCH  
296-432  
47 A

463-775  
0.32 AC  
THOMPSON METHODIST CHURCH

0.154 AC  
36-601  
ME. CHURCH

L.A. D'DOMENICO  
680-400  
27 A

571-818  
724-699  
21 A

L. G. DIDOMENICO  
819-654  
21 A

44 A  
124-121  
VANBUREN

0.12 W.M. FREDRICKS  
975-1174  
0.12 AC  
D. Wilbur

0.36  
0.12 AC  
804-838  
D. J. BRUENING

0.224 AC  
838-1035  
E.B. Stocker  
712-922  
A.T.A.

A. & P. Swiger  
562-134  
0.33 A

L. H. OLOS  
657-1243  
661-887  
599-478  
220-417  
2.21 AC

P.J. ROBINSON  
711-873  
2.0 A

P.R. ROBINSON  
21098  
0.30 A  
94-431  
709-1048

P.D. ROBINSON  
784-942  
0.25 AC

784-942  
0.25 AC

P.J. & R. ROBINSON  
1.048 AC  
550-812

P. ROBINSON  
319-314  
1.02 A

R. E. SIDLEY  
251-569  
19.58 A.

P. L. WILSON  
270-329  
322 A  
1.482 AC

P. L. WILSON  
0.41 A  
225-371

400-650  
2.12 A

915-577  
0.50 A  
J. A. Shaughnessy

G. M. RAYL, L.A. TRUSTEES  
259-494  
733-818  
1018-412  
1.1 A

512-1025  
G. L. GIBSON  
1.1 A

BOARD OF PARK COM. OF THOMPSON TWP.  
205-574  
1.30 A

292-98  
0.50 A

800-888  
78 A

W. L. & C. M. RADIGAN

520-202  
E. HOEFERLE  
587-1020  
1020-1306  
EVALUATE  
43 A  
589-280  
887-1237  
704-724

292-98  
0.50 A

800-888  
78 A

W. L. & C. M. RADIGAN

373-282  
287 A

PARCEL #1

0.25 A

8.689 AC

BD. OF EDUCATION THOMPSON SCHOOLS  
272-290  
16 A

THOMPSON TWP. PARK  
Comm.  
7.311 AC  
685-1322

20.71 A

L. D. & B. E. CRANDALL TRUSTEES  
855-802 #  
EXCEPTING .05 AC

1037-679 #  
679

706-822  
1.55 AC

706-822  
155 A  
255.75  
252.84

855-802 #  
1037-679 #  
551-221  
223

712-856  
72-856

1.358 AC

PARCEL #2  
L. D. & B. E. CRANDALL TRUSTEES

436.87'

237.87'

CRANDALL FORD INC.

730-273  
373-287  
769 AC.

206-63'

THOMPSON RD

436.87'

436.87'

436.87'

436.87'

436.87'

436.87'

436.87'

436.87'

436.87'

436.87'

436.87'

436.87'

436.87'

436.87'

436.87'

436.87'

436.87'

436.87'

436.87'

436.87'

436.87'

436.87'

436.87'

436.87'

436.87'

436.87'

436.87'

436.87'

436.87'

436.87'

436.87'

436.87'

436.87'

436.87'

436.87'

436.87'

436.87'

436.87'

436.87'

436.87'

436.87'

436.87'

436.87'

436.87'

436.87'

436.87'

436.87'

436.87'

436.87'

436.87'

436.87'

436.87'

436.87'

436.87'

436.87'

436.87'

436.87'

436.87'

436.87'

436.87'

436.87'

436.87'

436.87'

436.87'

436.87'

436.87'

436.87'

436.87'

436.87'

436.87'

436.87'

436.87'

436.87'

436.87'

436.87'

436.87'

436.87'

436.87'

436.87'

436.87'

436.87'

436.87'

436.87'

436.87'

436.87'

436.87'

436.87'

436.87'

436.87'

436.87'

436.87'

436.87'

436.87'

436.87'

436.87'

436.87'

436.87'

436.87'

436.87'

436.87'

436.87'

436.87'

436.87'

436.87'

436.87'

436.87'

436.87'

436.87'

436.87'

436.87'

436.87'

436.87'

436.87'

436.87'

436.87'

436.87'

436.87'

436.87'

436.87'

436.87'

436.87'

436.87'

436.87'

436.87'

436.87'

436.87'

436.87'

436.87'

436.87'

436.87'

436.87'

436.87'

436.87'

436.87'

436.87'

436.87'

436.87'

436.87'

436.87'

436.87'

436.87'

436.87'

436.87'

436.87'

436.87'

436.87'

436.87'

436.87'

436.87'

436.87'

436.87'

436.87'

436.87'

436.87'

436.87'

436.87'

436.87'

436.87'

436.87'

436.87'

436.87'

436.87'

436.87'

436.87'

436.87'

436.87'

436.87'

436.87'

436.87'

436.87'

436.87'

436.87'

436.87'

436.87'

436.87'

436.87'

436.87'

436.87'

436.87'

436.87'

436.87'

436.87'

436.87'

436.87'

436.87'

436.87'

436.87'

436.87'

436.87'

436.87'

436.87'

436.87'

436.87'

436.87'

436.87'

436.87'

436.87'

436.87'

436.87'

436.87'

436.87'

436.87'

436.87'

436.87'

436.87'

436.87'

436.87'